



UNI TECHNICS

INNOVATIONS FOR
YOUR SEWAGE SYSTEM

ODOR | EXTRANEEOUS WATER | ENGINEERING

Products for sewage systems



UNITECHNICS KG

Company information

UNITECHNICS is a company from Germany, which develops strategies and solutions for drainage systems. With highly qualified and dedicated staff, UNITECHNICS supports operators, associations, and the industry as a competent partner. In professional circles UNITECHNICS has made a name for itself with innovative ideas and is known for new and quite unconventional ways. It is crucial that these ideas are purposeful and excel in the result. The focus is on the engineering and the resulting process and product development.

From the idea to the practical implementation of standard- and customized solutions:

- Engineering with concrete situation assessment based on innovative engineering services
- Project development, accompaniment and settlement
- Product development and manufacturing in the company headquarters in Schwerin
- Support services

This dealer information contains a selection of UNITECHNICS products and services.



Content

Products for sewage systems

Products against surface water infiltration	4
Water shutout system Uni-FreWa	5
Special attachment clamping ring	6
Water shutout system Uni-FreWa-Ü100	7
Water shutout system Uni-FreWa-Ü200	8
Water shutout system Uni-FreWa-Ü300	9
Flood closure system FRV.....	10
Flood closure system FRV-Ü100	11
Flood closure system FRV-Ü200	12
Flood closure system FRV-Ü300	13
Flood closure system HVS-R	14
Flood closure system HVS-E	15
Flood closure system HVS-K	16

Products against surface infiltration water

in sewage systems

Situation and problem:

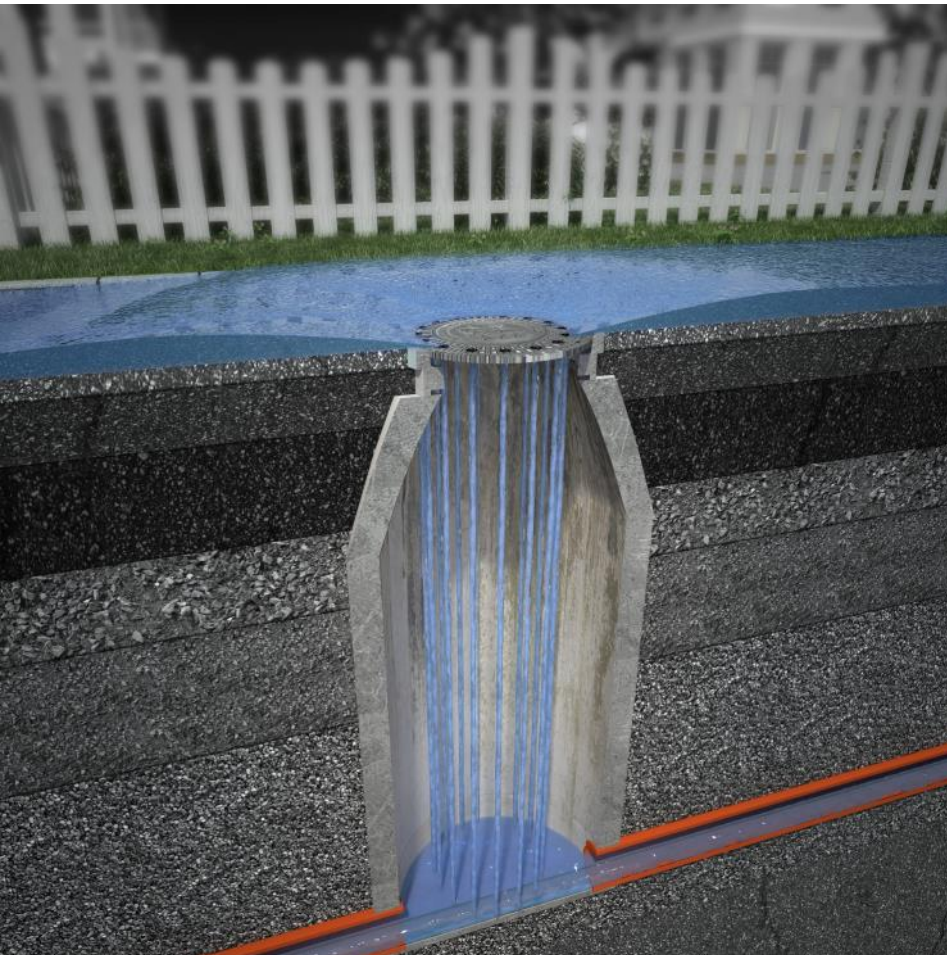
Surface water (extraneous water) during heavy rain, snow melt and flooding each year causing accidents and congestion in wastewater networks. Both the intensity and the amount of water will continue to rise in the coming years - on all participants need to adjust. Sewage systems according to the separation system are designed so that rain water should not be initiated and carried away into the wastewater sewer. Nevertheless a tremendous amount of surface water and sediment enters through the ventilation openings of manhole covers in the waste water channels. Even with a water level of only 10 mm of roads may be incorporated into the sewage system more than 17 m³ / h over the vents on the manhole cover. Operators of wastewater treatment plants increasingly consider the use of UNITECHNICS water shutout systems in the planning and redevelopment.

Secondly, they must find for existing installations technically feasible and economically viable solutions to solve this problem: water shutout systems by UNITECHNICS.

After the use of an water shutout system FRK, these flows are greatly reduced. The system also permits after the rain event again the ventilation of the shaft. This is important in order not to disclose it to the corrosion.

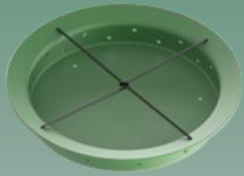
UNITECHNICS water shutout systems

...are used where the causes are and therefore can effectively reduce or prevent the entry of surface water through the ventilation openings by manhole covers. Models with patented drainage system protect against corrosion by establishing DIN-compliant ventilation again.

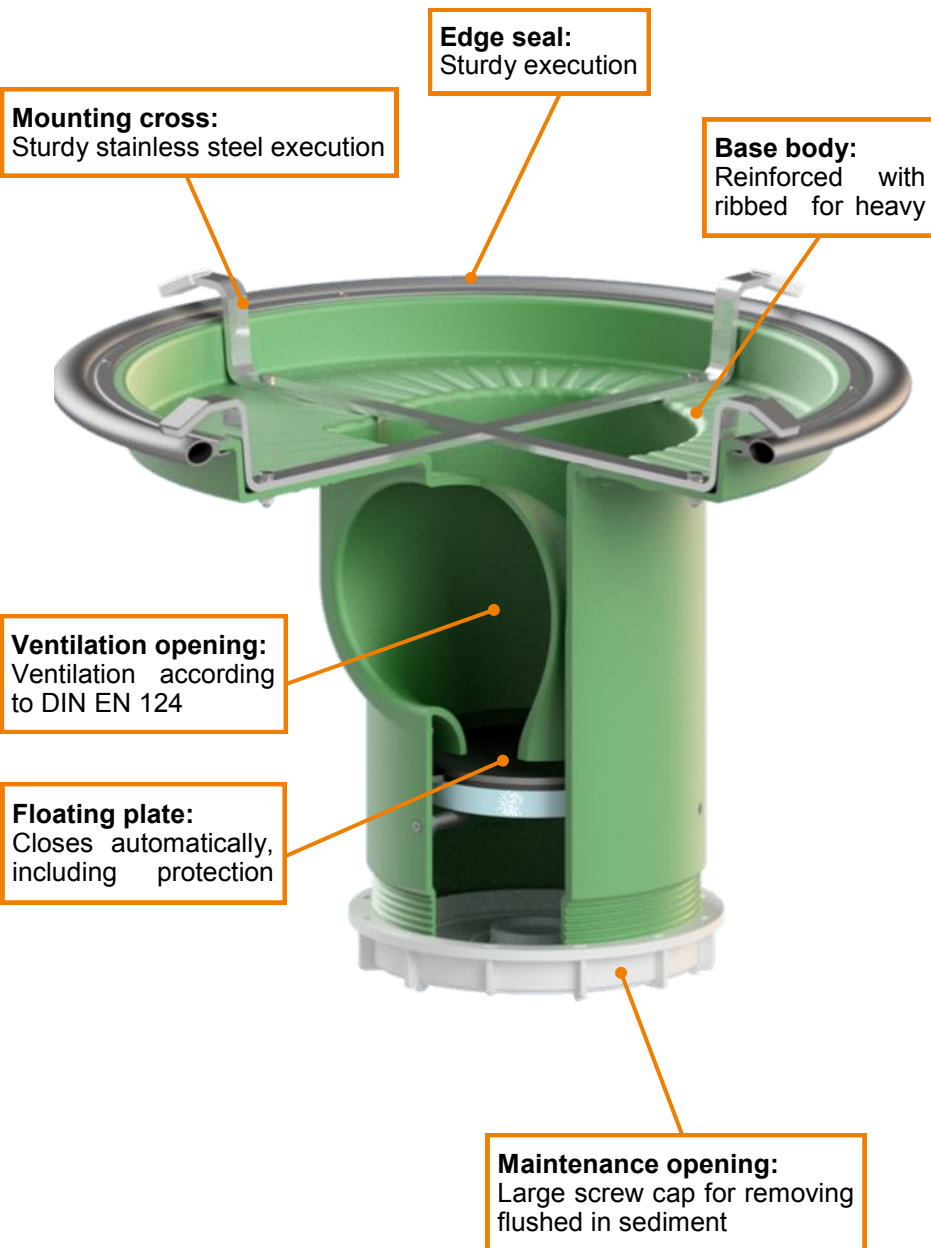


Water shutout system Uni-FreWa for shaft-manholes

To ventilate shaft-manholes during dry phases and shut out water during rain or floods.



Including special dirt-catch

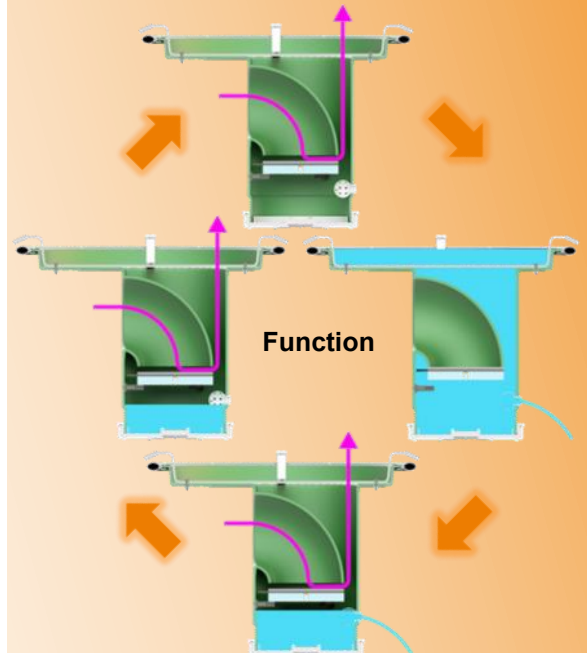


Areas of application:

- Shafts to DIN 4034 with manhole cover according to DIN 19584 (special hangers possible on request)

Features:

- **Reliable closure of the shaft-manhole at surface water intrusion**
- **Full ventilation** according to DIN EN 124 after the end of the surface water intrusion
- **Low maintenance** because of large sediment stacking space
- **Automatic opening in case of backflow**
- Special sizes available on request
- **Suitable for flood heights up to 0.5 m**



Installation illustration

Special mounting system Clamping ring

for shaft-manholes in combination with Uni-FreWa

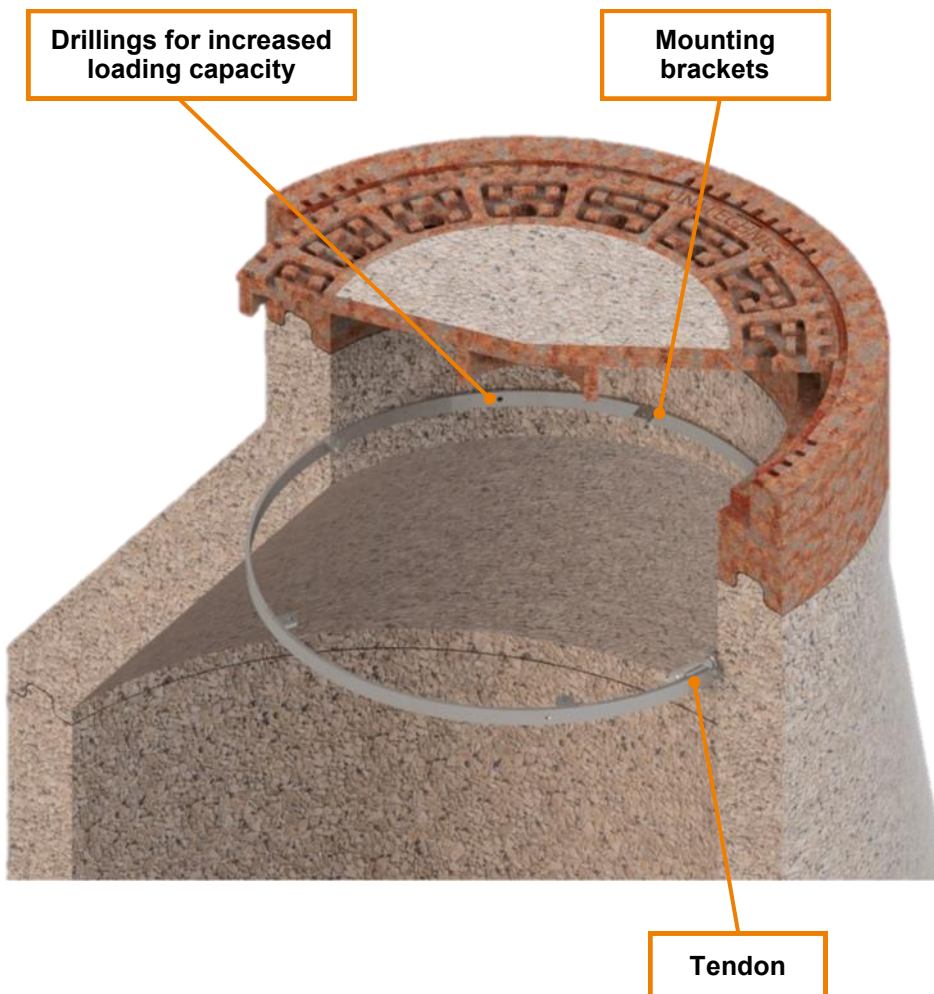


Areas of application:

- Municipal and industrial waste water facilities
- Shafts to DIN 4034 with manhole cover according to DIN 19584
- Special Mounting if there are no regular hook-in options
- Fits Uni-AdSorber-B, Uni-AdSorber-HD, Uni-FreWa and FRV

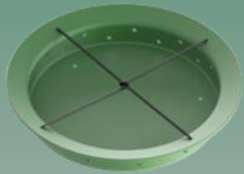
Advantages:

- Additional fixation at the shaft through drillings possible
- Individual adjustment of depth
- Strong footing untill float heights of 0.5 m
- Easy installation and removal
- Low corrosion risk and longevity due to stainless steel construction

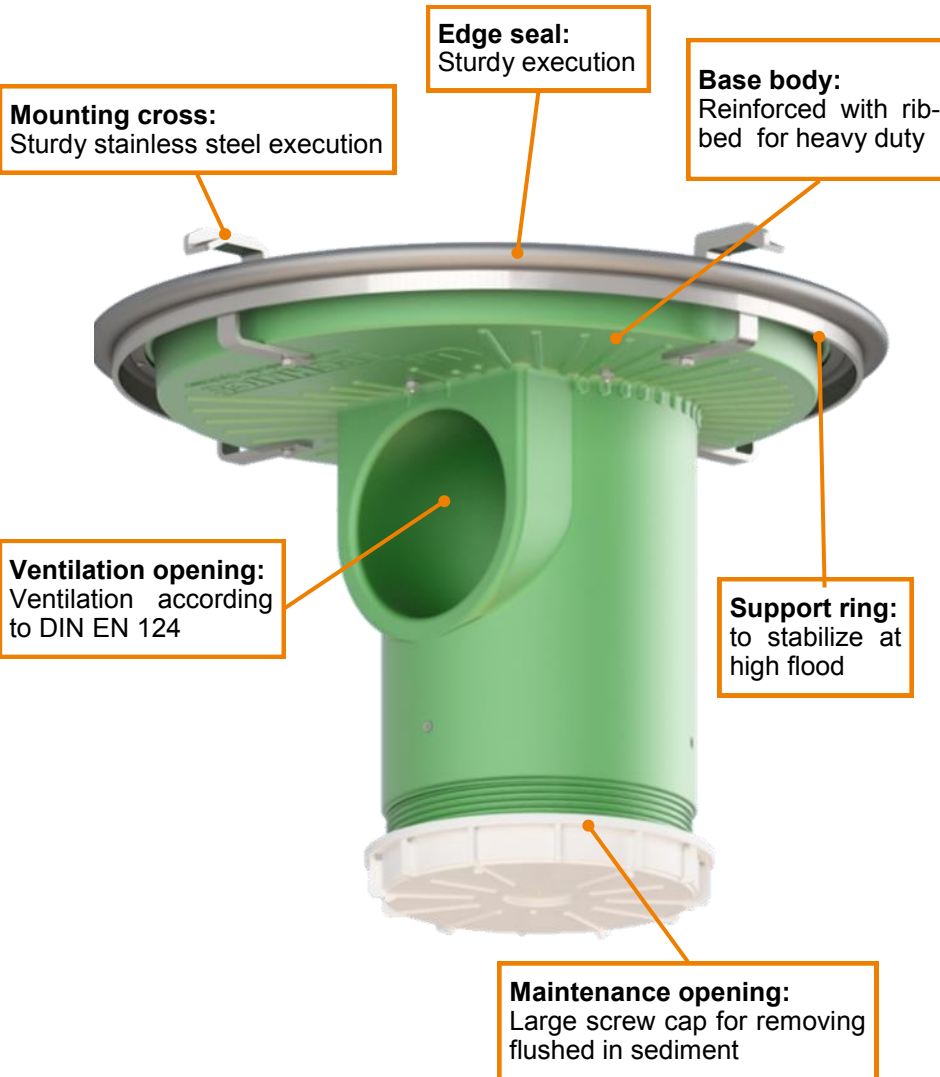


Installation illustration

Water shutout system Uni-FreWa-Ü100 for shaft-manholes



Including special dirt-catch

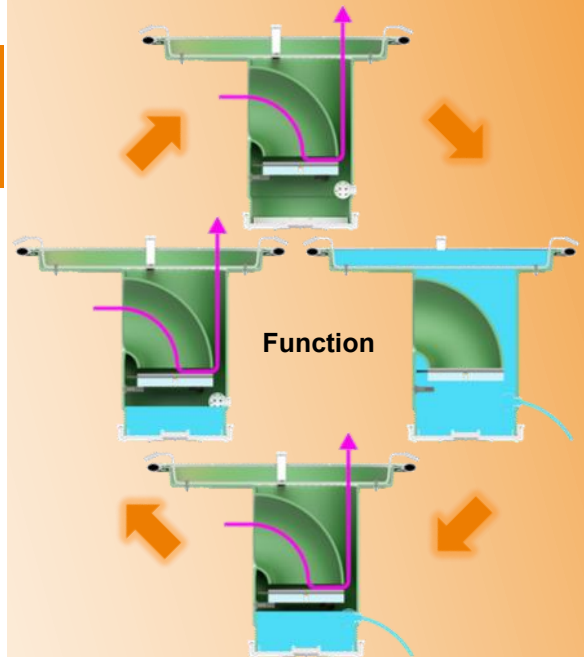


Areas of application:

- Shafts to DIN 4034 with manhole cover according to DIN 19584 (special hangers possible on request)

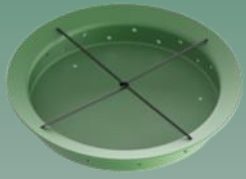
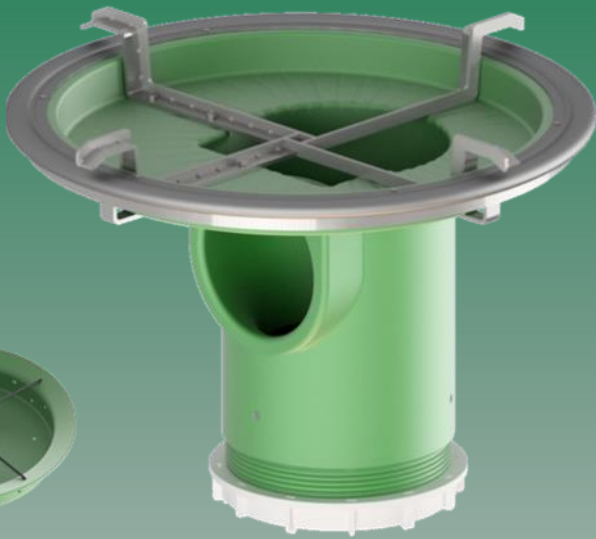
Features:

- **Reliable closure of the shaft-manhole at surface water intrusion**
- **Full ventilation** according to DIN EN 124 after the end of the surface water intrusion
- **Low maintenance** because of large sediment stacking space
- **Automatic opening in case of backflow**
- Special sizes available on request
- **Suitable for flood heights up to 1.0 m**

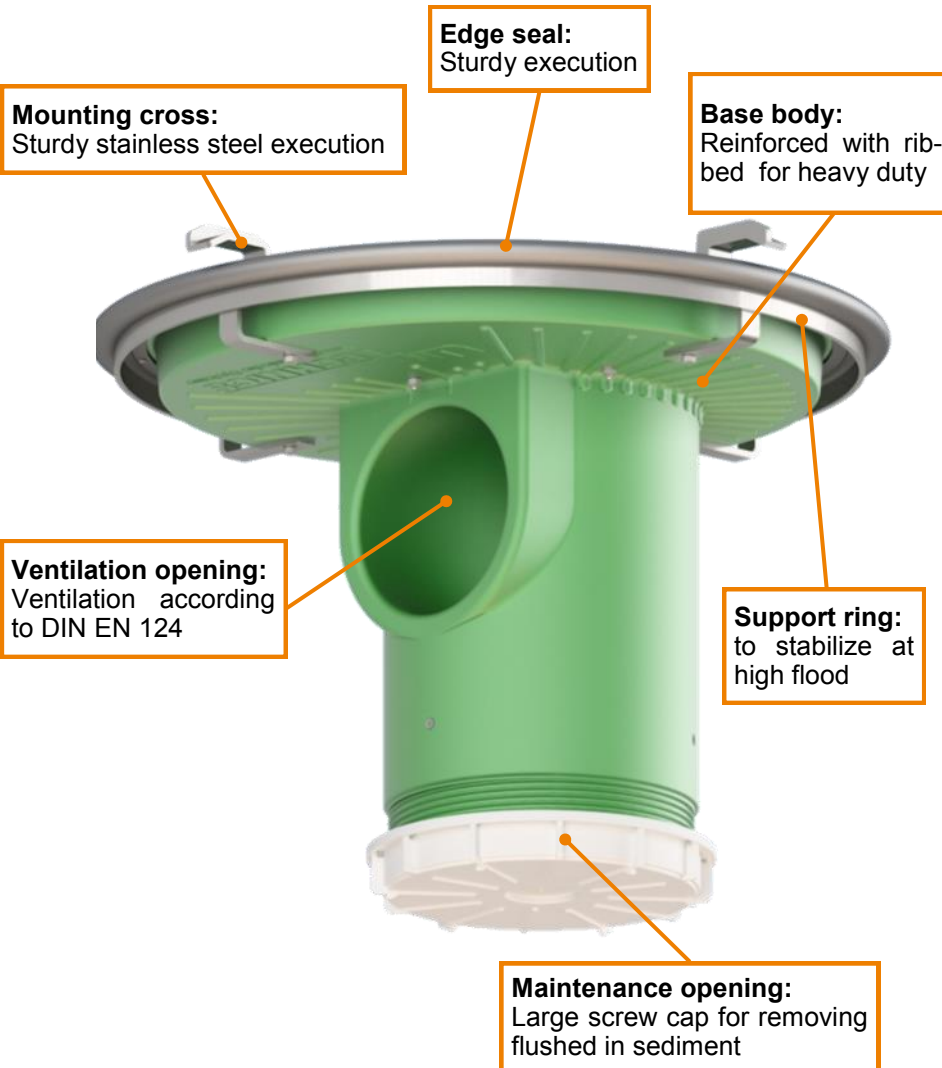


Installation illustration

Water shutout system Uni-FreWa-Ü200 for shaft-manholes



Including special

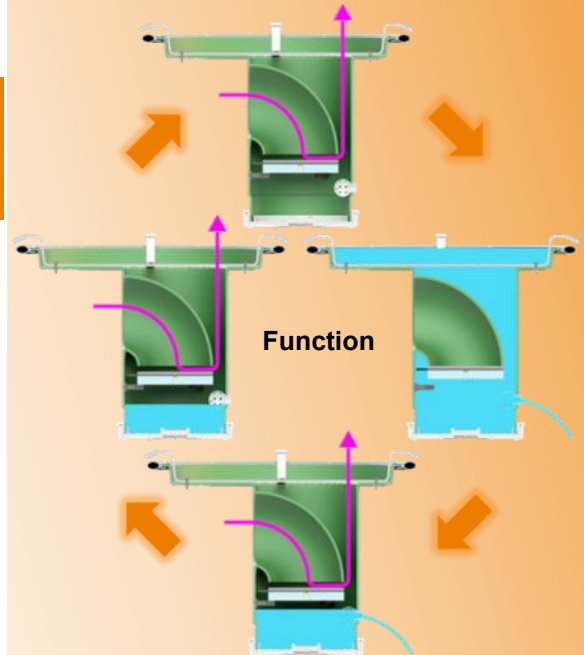


Areas of application:

- Shafts to DIN 4034 with manhole cover according to DIN 19584 (special hangers possible on request)

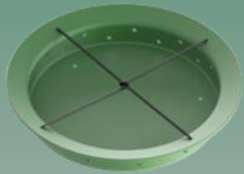
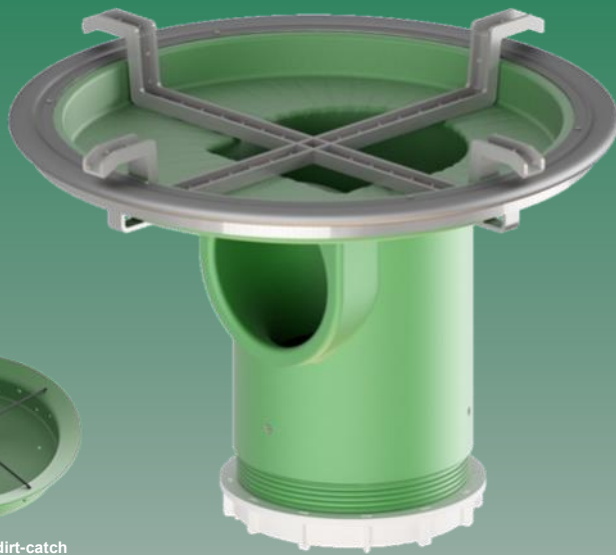
Features:

- **Reliable closure of the shaft-manhole at surface water intrusion**
- **Full ventilation** according to DIN EN 124 after the end of the surface water intrusion
- **Low maintenance** because of large sediment stacking space
- **Automatic opening in case of backflow**
- Special sizes available on request
- **Suitable for flood heights up to 2.0 m**

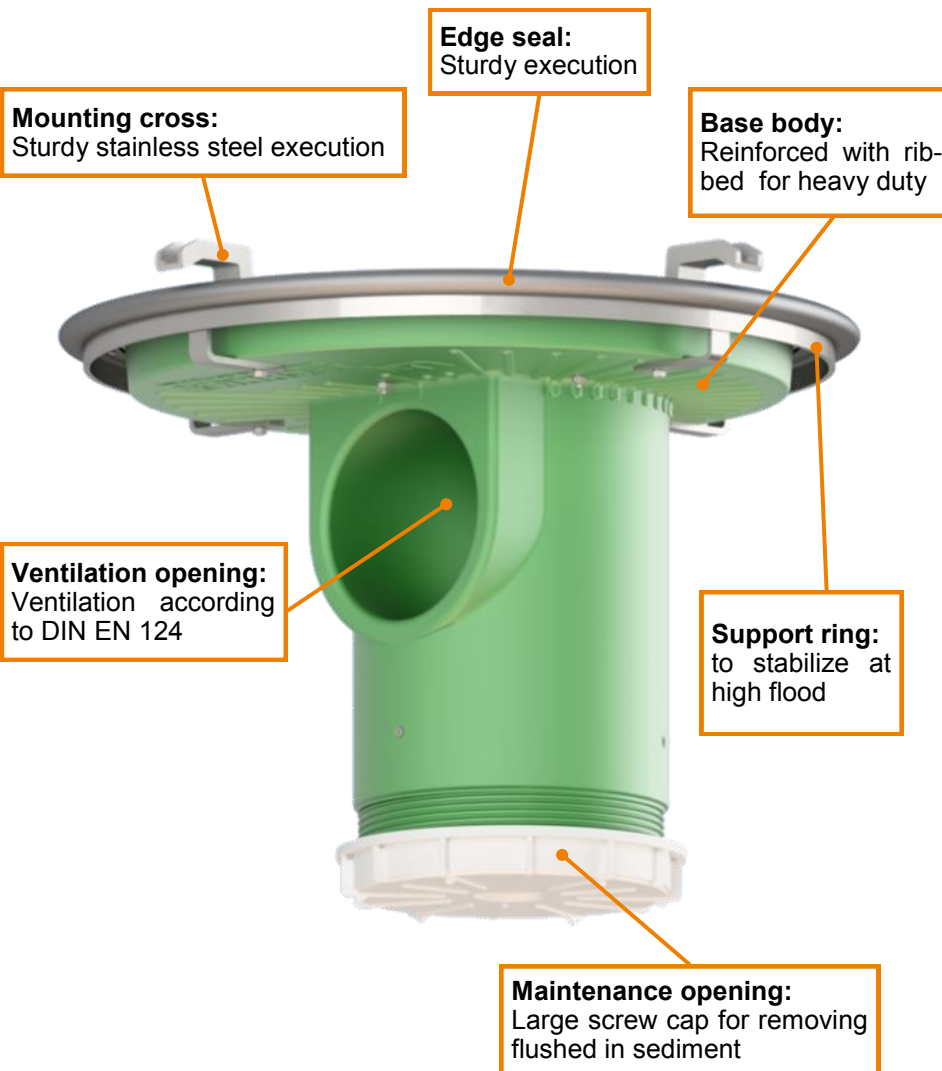


Installation illustration

Water shutout system Uni-FreWa-Ü300 for shaft-manholes



Including special dirt-catch

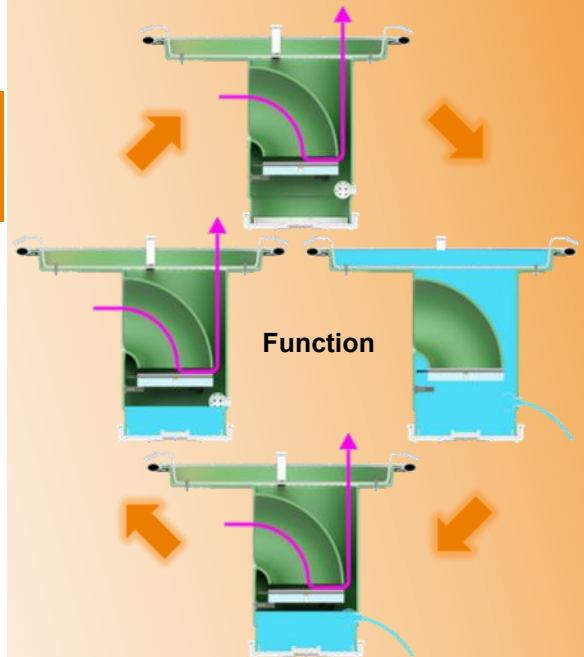


Areas of application:

- Shafts to DIN 4034 with manhole cover according to DIN 19584 (special hangers possible on request)

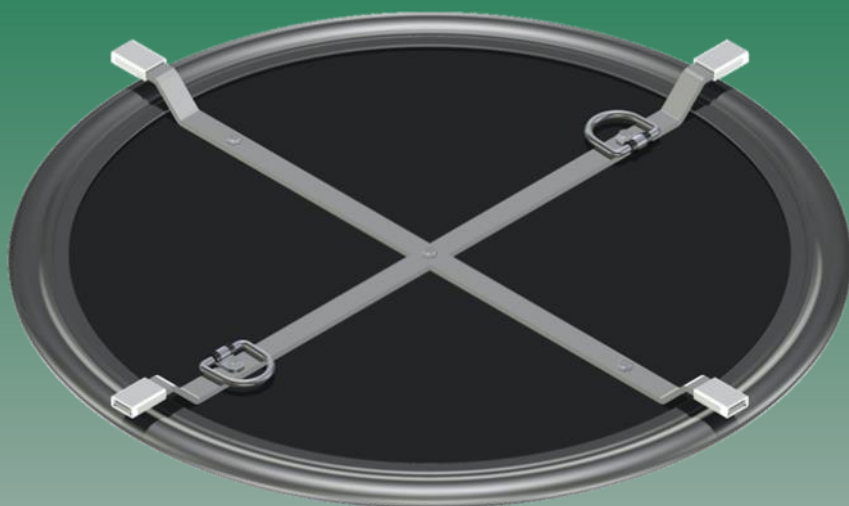
Features:

- **Reliable closure of the shaft-manhole at surface water intrusion**
- **Full ventilation** according to DIN EN 124 after the end of the surface water intrusion
- **Low maintenance** because of large sediment stacking space
- **Automatic opening in case of backflow**
- Special sizes available on request
- **Suitable for flood heights up to 5.0 m**



Installation illustration

Flood closure system FRV for shaft-manholes



View from below

Areas of application:

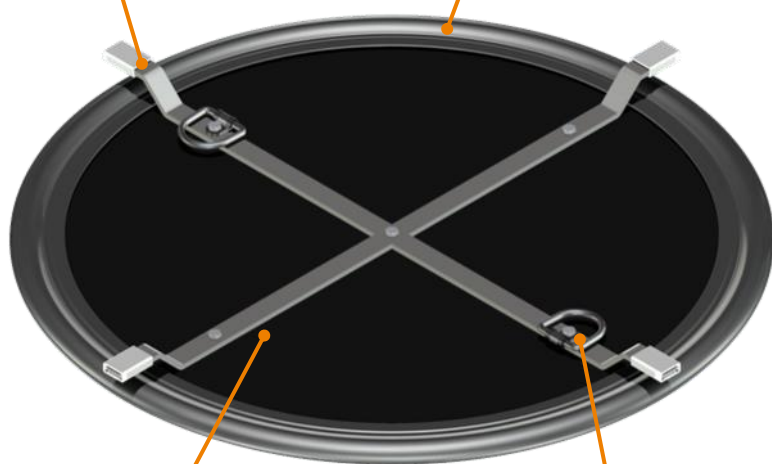
- Shafts to DIN 4034 with manhole cover according to DIN 19584
- Manholes with manhole diameter $D = 625 \text{ mm}$
- Brief exposure flood during heavy rain, snow melt and flooding
- Can also be used as a flood closure
- Suitable for flood heights up to 0.5 m

Features:

- Complete closure of the shaft-manhole
- Easy installation and removal
- Non-slip and stable edge seal
- Special sizes available on request

Mounting cross:
Sturdy stainless steel execution

Edge seal:
Sturdy execution



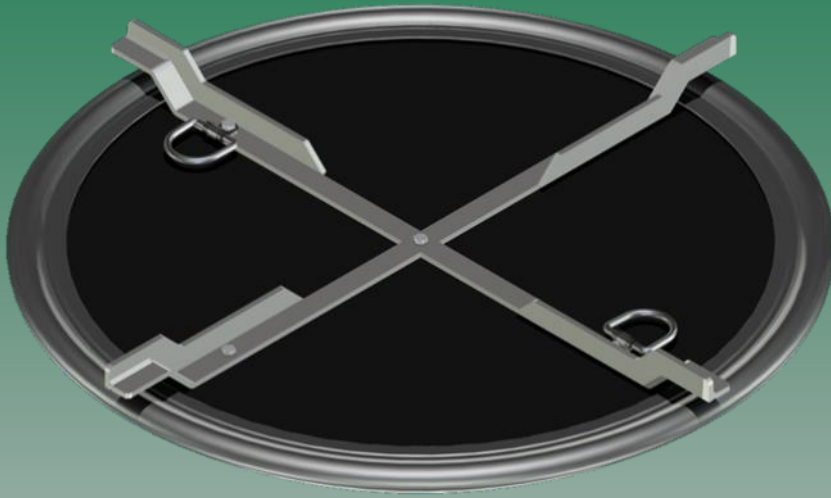
Main plate:
Stable main plate made of PE-HD withstands flood heights up to 0.5 m

Handle loop:
For easy removal of the system, folding to reduce the construction height



Installation illustration

Flood closure system FRV-Ü100 for shaft-manholes



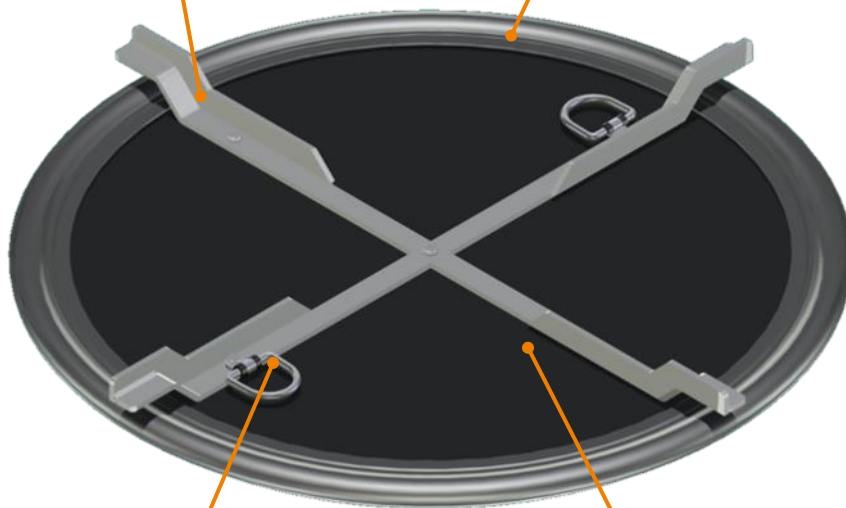
View from below

Areas of application:

- Shafts to DIN 4034 with manhole cover according to DIN 19584
- Manholes with manhole diameter $D = 625 \text{ mm}$
- Brief exposure flood during heavy rain, snow melt and flooding
- Can also be used as a flood closure
- Suitable for flood heights up to 1.0 m

Mounting cross:
reinforced stainless steel execution

Edge seal:
Sturdy execution



Handle loop:
For easy removal of the system, folding to reduce the Construction height

Main plate:
Stable main plate made of PE-HD withstands flood heights up to 1.0 m

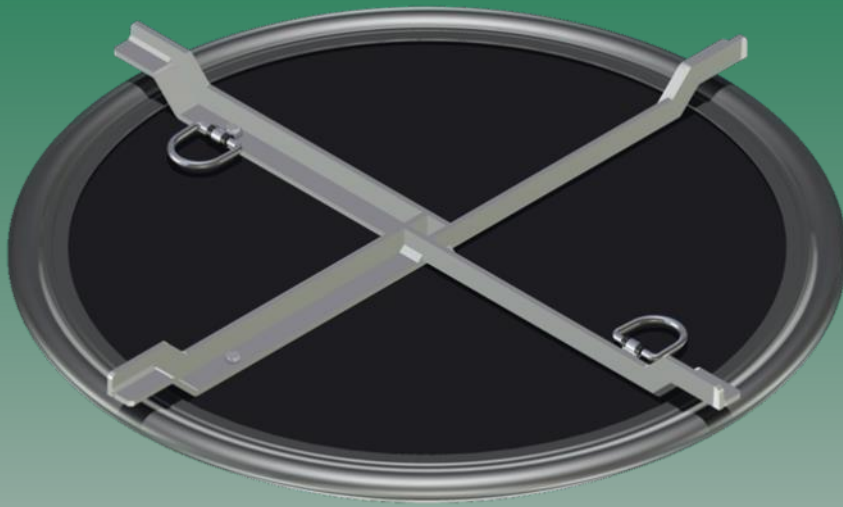
Features:

- Complete closure of the shaft-manhole
- Easy installation and removal
- Non-slip and stable edge seal
- Special sizes available on request



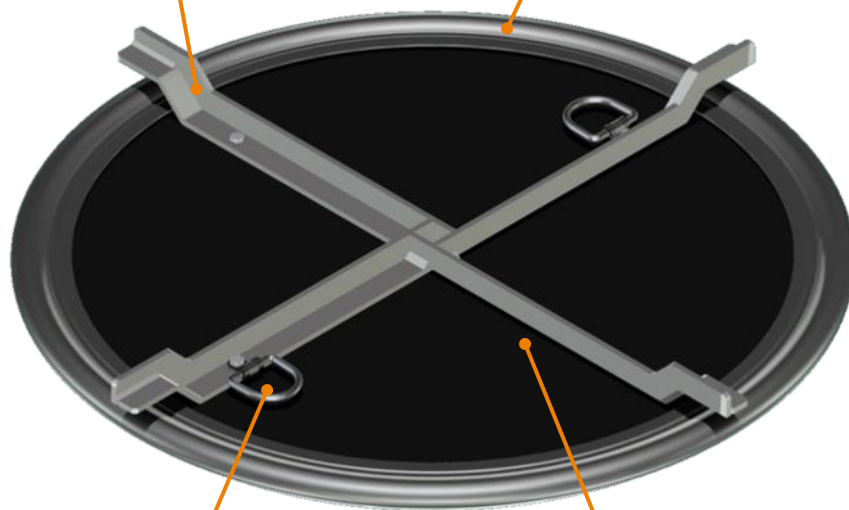
Installation illustration

Flood closure system FRV-Ü200 for shaft-manholes



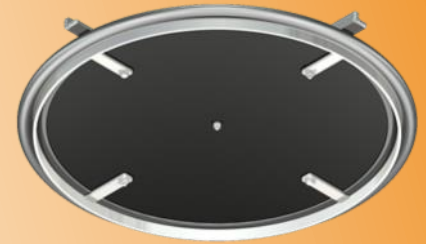
Edge seal:
Sturdy execution

Mounting cross:
reinforced stainless steel execution



Handle loop:
For easy removal of the system,
folding to reduce the Construc-
tion height

Main plate:
Stable main plate made of
PE-HD withstands flood
heights up to 2.0 m



View from below

Areas of application:

- Shafts to DIN 4034 with manhole cover according to DIN 19584
- Manholes with manhole diameter $D = 625 \text{ mm}$
- Brief exposure flood during heavy rain, snow melt and flooding
- Can also be used as a flood closure
- Suitable for flood heights up to 2.0 m

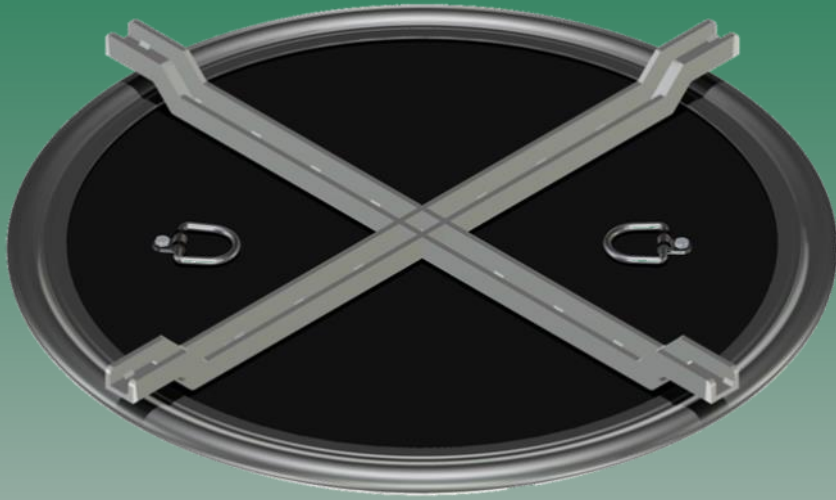
Features:

- Complete closure of the shaft-manhole
- Easy installation and removal
- Non-slip and stable edge seal
- Special sizes available on request



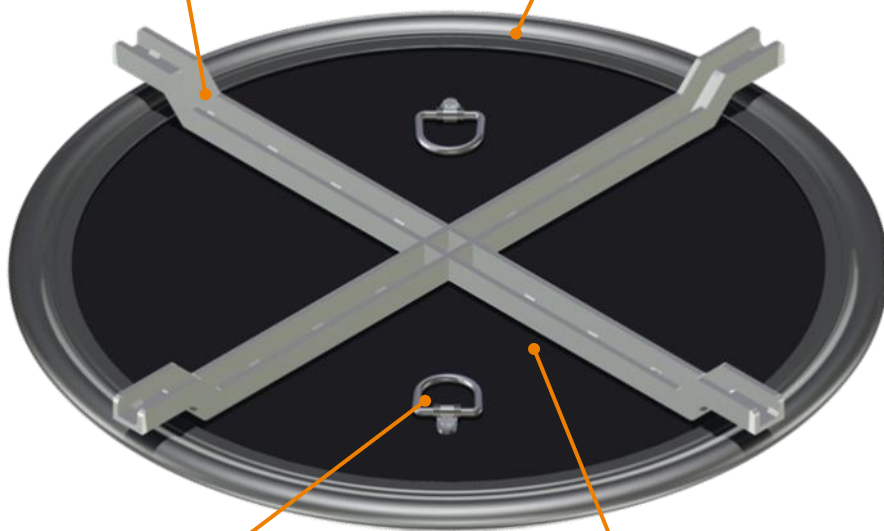
Installation illustration

Flood closure system FRV-Ü300 for shaft-manholes



Edge seal:
Sturdy execution

Mounting cross:
reinforced stainless steel execution



Handle loop:
For easy removal of the system,
folding to reduce the Construc-
tion height

Main plate:
Stable main plate made of
PE-HD withstands flood
heights up to 2.0 m



View from below

Areas of application:

- Shafts to DIN 4034 with manhole cover according to DIN 19584
- Manholes with manhole diameter $D = 625 \text{ mm}$
- Brief exposure flood during heavy rain, snow melt and flooding
- Can also be used as a flood closure
- Suitable for flood heights up to 5.0 m

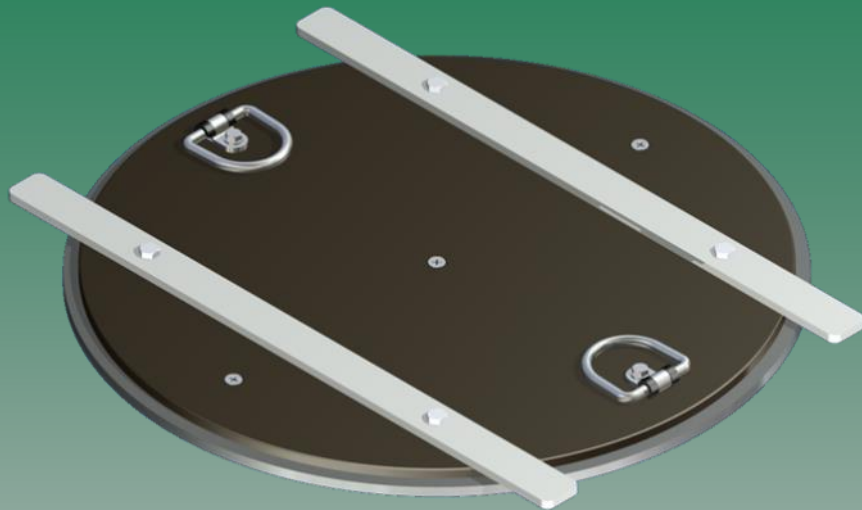
Features:

- Complete closure of the shaft-manhole
- Easy installation and removal
- Non-slip and stable edge seal
- Special sizes available on request



Installation illustration

Flood closure system HVS-R for street gullies



View from below

Areas of application:

- Municipal and industrial waste water facilities
- **DIN-compliant Street gullies with frames 500 x 500 mm**
- **Can be used as a flood closure**

Features:

- **Complete closure of the shaft-manhole**
- **Easy installation and removal**
- **Non-slip and stable edge seal**
- **Special sizes available on request**

Attachment:
Sturdy stainless steel execution

Edge seal:
Sturdy rubber execution

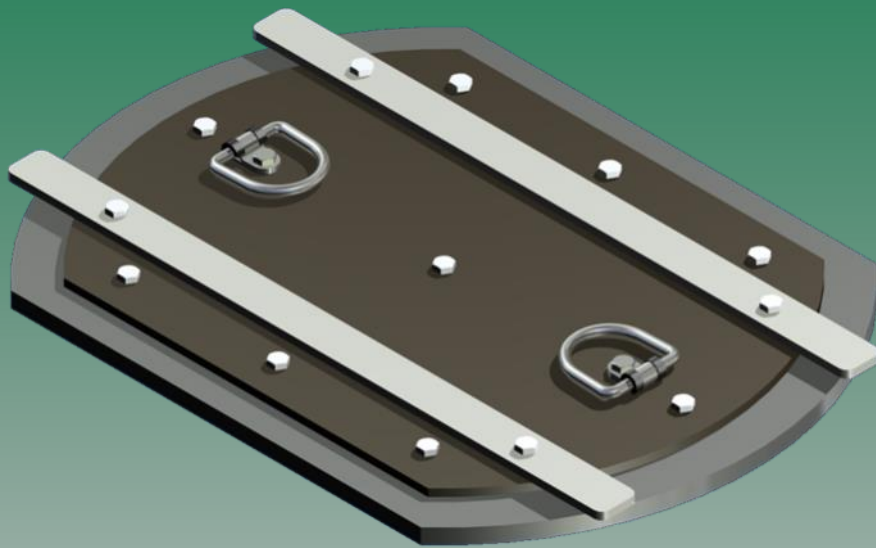
Handle loop:
For easy removal of the system,
folding to reduce the Construction height

Main plate:
Stable main plate made of
PE-HD withstands flood
heights up to 1.0 m



Installation illustration

Flood closure system HVS-E for street gullies



Attachment:
Sturdy stainless steel execution

Edge seal:
Sturdy rubber execution

Handle loop:
For easy removal of the system,
folding to reduce the Construc-
tion height

Main plate:
Stable main plate made of
PE-HD withstands flood
heights up to 1.0 m



View from below

Areas of application:

- Municipal and industrial waste water facilities
- **DIN-compliant Street gullies with frames 300 x 500 mm**
- Can be used as a flood closure

Features:

- **Complete closure of the shaft-manhole**
- **Easy installation and removal**
- Non-slip and stable edge seal
- **Special sizes available on request**

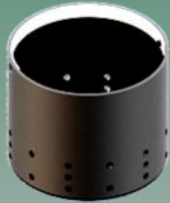


Installation illustration

Flood closure system HVS-K

for street gullies

protection at flood
and fueling areas



Including special dirt-catch



Locking lever:

Opening and closing by lifting and lowering operation with a commercial pit hook possible

Bracket angle:

To fix the system

Sealing lip:

For secure closure against unwanted surface water and pollutants

open

close

Ventilation opening
DN 150

Closure ball:
Closes vent DN 150

Areas of application:

- Municipal and industrial waste water facilities
- Suitable for all street gullies
- Used specifically as a general average closure during floods or refueling areas

Features:

- Complete closure of the street gully
- Fast installation and removal under the grate
- Operation **WITHOUT** removal of the grate possible
- Non-slip and stable edge seal
- Including special dirt-catch
- Special sizes on request

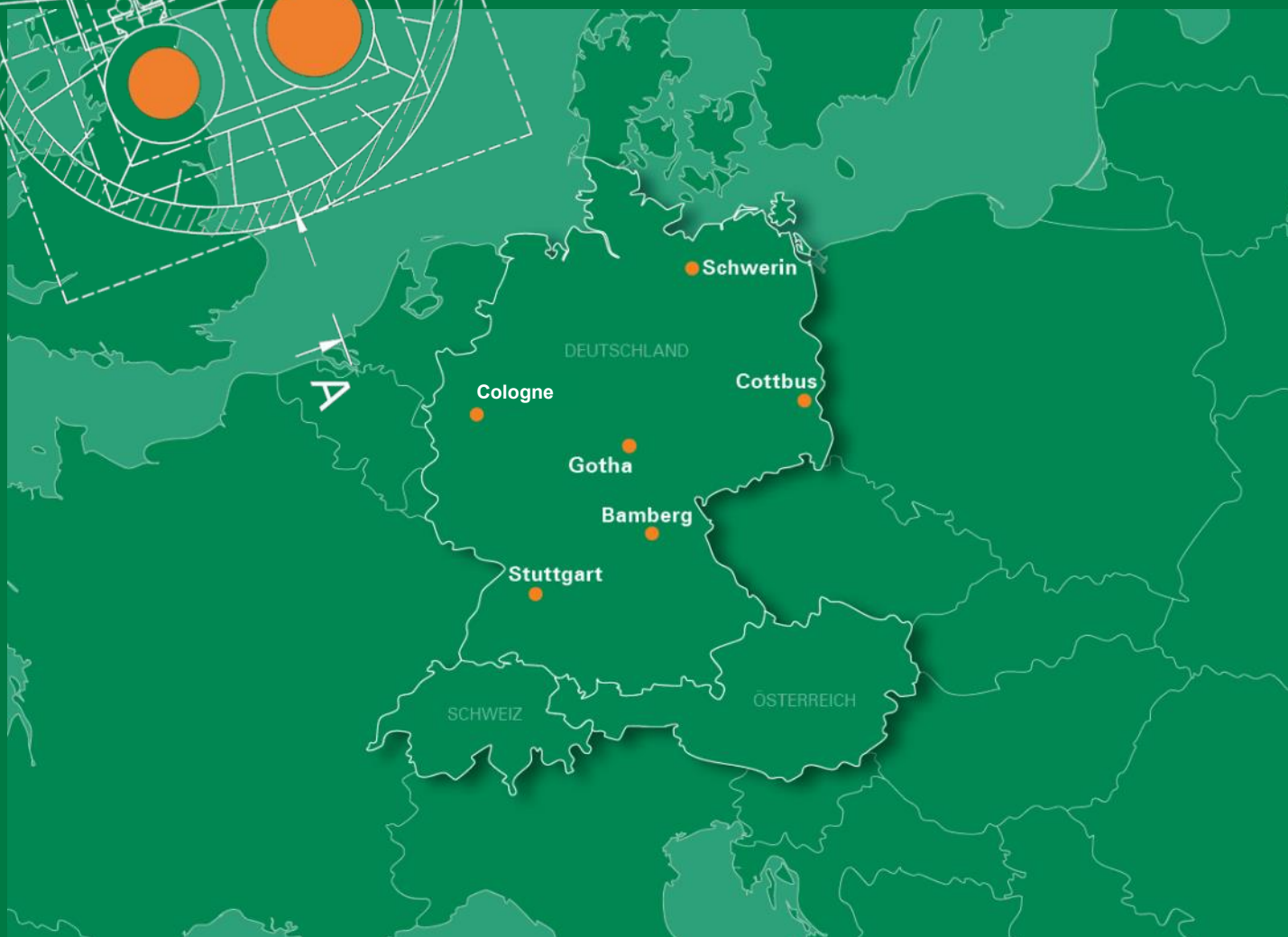
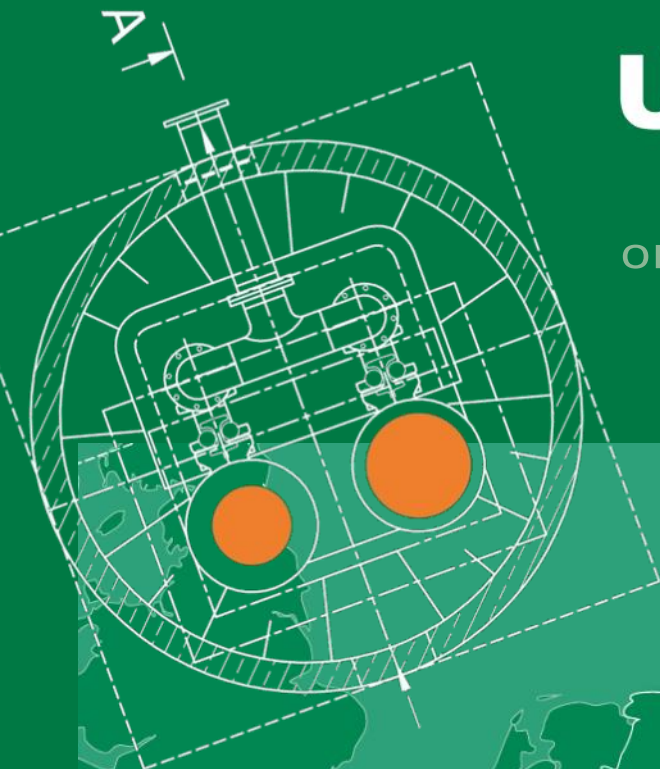


Installation illustration

UNI TECHNICS

INNOVATIONS FOR
YOUR SEWAGE SYSTEM

ODOR | EXTRANEEOUS WATER | ENGINEERING



UNITECHNICS KG

Headquarter

Werkstraße 717 • D-19061 Schwerin

Phone 0385 343371-20 • Fax 0385 343371-31

info@unitechnics.de • www.unitechnics.de



Join us on YouTube, Facebook und Twitter.